

TASMAN INDUSTRIAL CENTER | 1211 Alderwood Ave, Sunnyvale, CA



Lease | 3,872 Square Feet

R&D/Light Manufacturing/Warehouse

Reception area, four offices, one large conference room, two restrooms, small break area, HVAC throughout offices. Remainder warehouse with grade level roll up door and gas heater.

400 amps/120/208 3 phase

Available July 1, 2017 - Call Nancy Zaro to tour.

FEATURES

- Central location at Lawrence Expressway & Tasman Dr.
- Easy access to Highways 237, 101 and 85
- 2.76/1000 Parking
- Restaurants within walking distance
- Light Rail accessible

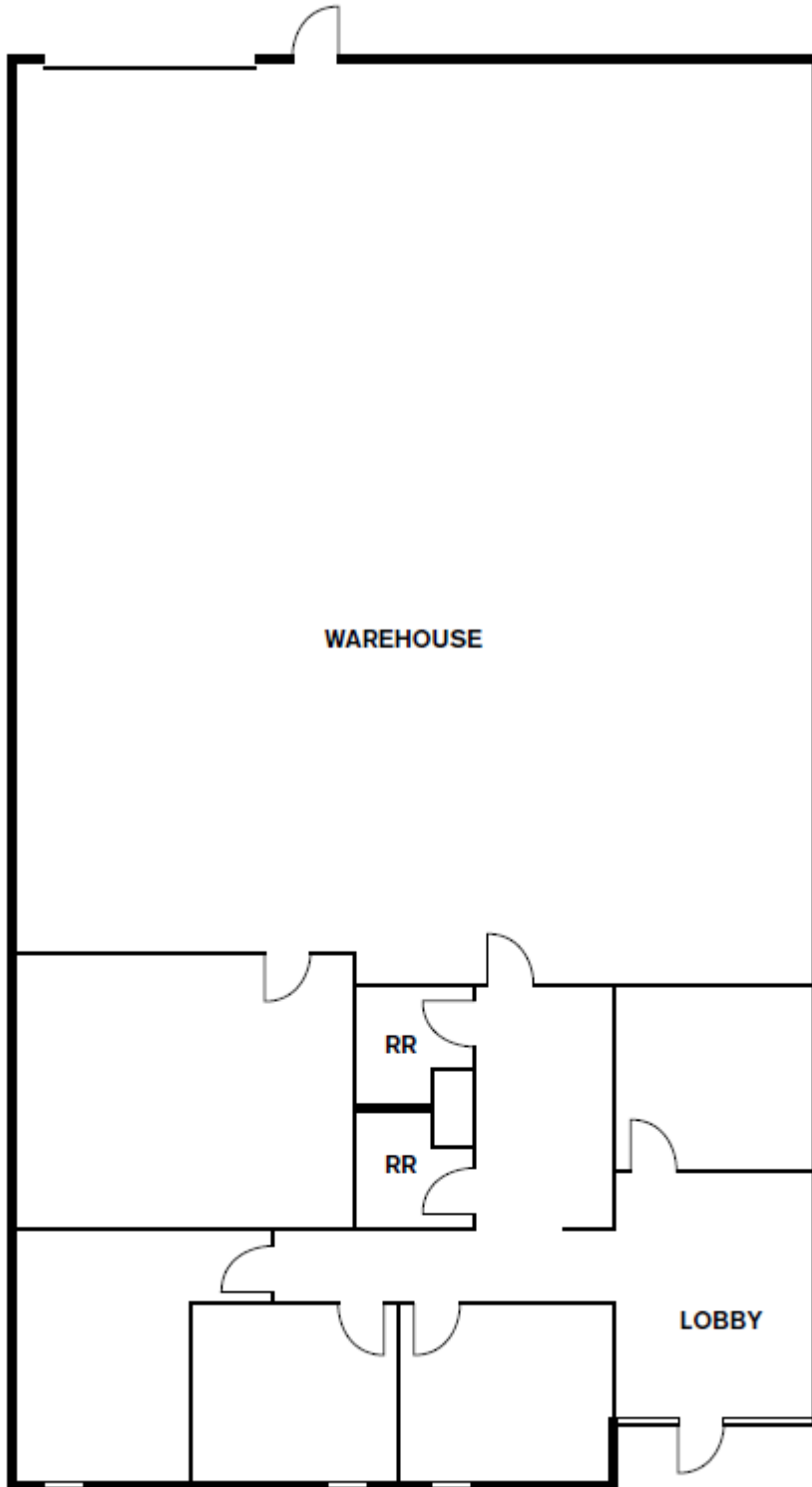
NANCY ZARO

Lic # 01316364
o 408.796.0038
nzaro@southbay.us

PAULA PARISI

Lic # 01762550
o 408.796.0028
pparisi@southbay.us

1211 Alderwood Avenue | 3,872 SF | Bldg. 4



SOUTH BAY
DEVELOPMENT CO.

NANCY ZARO

Lic # 01316364
o 408.796.0038 | f 408.379.6782
nzaro@southbay.us
1690 Dell Ave, Campbell, CA 95008

PAULA PARISI

Lic # 01762550
o 408.796.0028 | f 408.379.6782
pparisi@southbay.us
1690 Dell Ave, Campbell, CA 95008