

TASMAN INDUSTRIAL CENTER | 1203 Alderwood Ave, Sunnyvale, CA



Lease | 1,936 Square Feet

R&D/Light Manufacturing/Warehouse

Reception area with one large office with HVAC. Warehouse with heating unit and grade level roll up door.

175 Amps 120/208 3 phase

Available May 1, 2017. Call Nancy Zaro to tour.

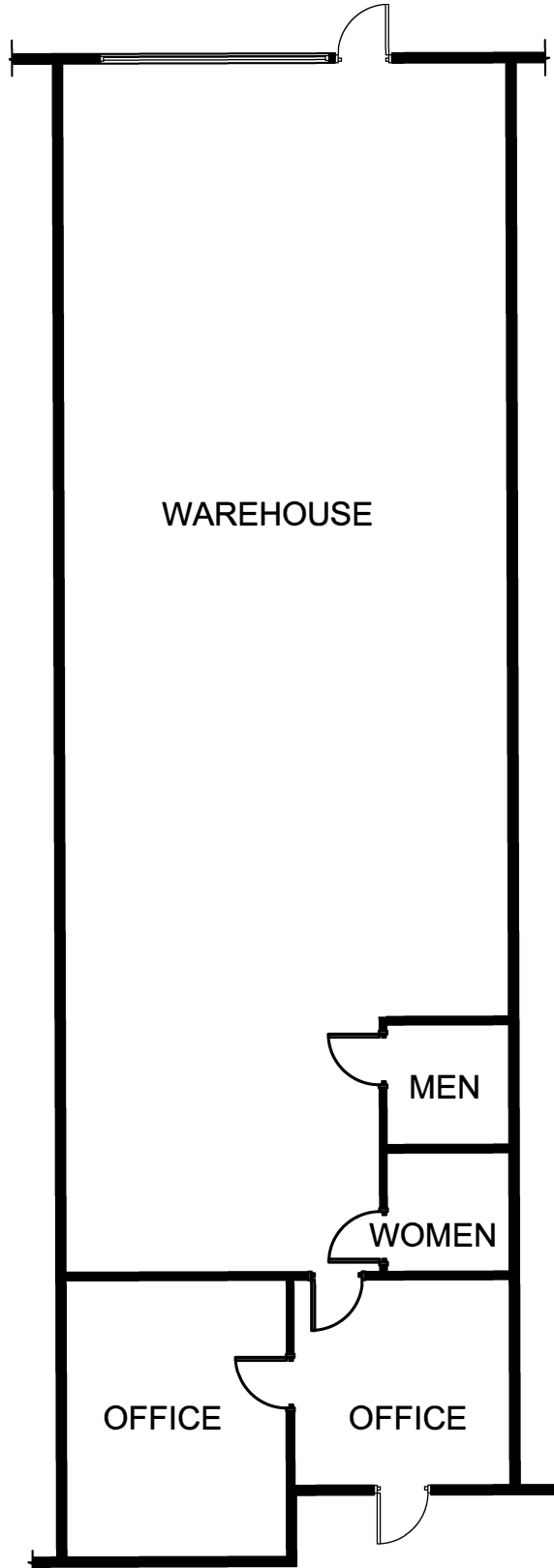
FEATURES

- Central location at Lawrence Expressway & Tasman Dr.
- Easy access to Highways 237, 101 and 85
- 2.76/1000 parking
- Restaurants within walking distance
- Light Rail accessible

NANCY ZARO

Lic # 01316364
 o 408.796.0038
 nzaro@southbay.us

1203 Alderwood Drive | 1936 SF



SOUTH BAY
DEVELOPMENT CO.

NANCY ZARO
Lic # 01316364
o 408.796.0038 | f 408.379.6782
nzaro@southbay.us
1690 Dell Ave, Campbell, CA 95008