

**TASMAN INDUSTRIAL CENTER | 1203 Alderwood Ave, Sunnyvale, CA**



**Lease | 1,936 Square Feet**

*R&D/Light Manufacturing/Warehouse*

*Reception area with one large office with HVAC. Warehouse with heating unit and grade level roll up door.*

*175 Amps 120/208 3 phase*

*Available May 1, 2017. Call Nancy Zaro to tour.*

**FEATURES**

- Central location at Lawrence Expressway & Tasman Dr.
- Easy access to Highways 237, 101 and 85
- 2.76/1000 parking
- Restaurants within walking distance
- Light Rail accessible

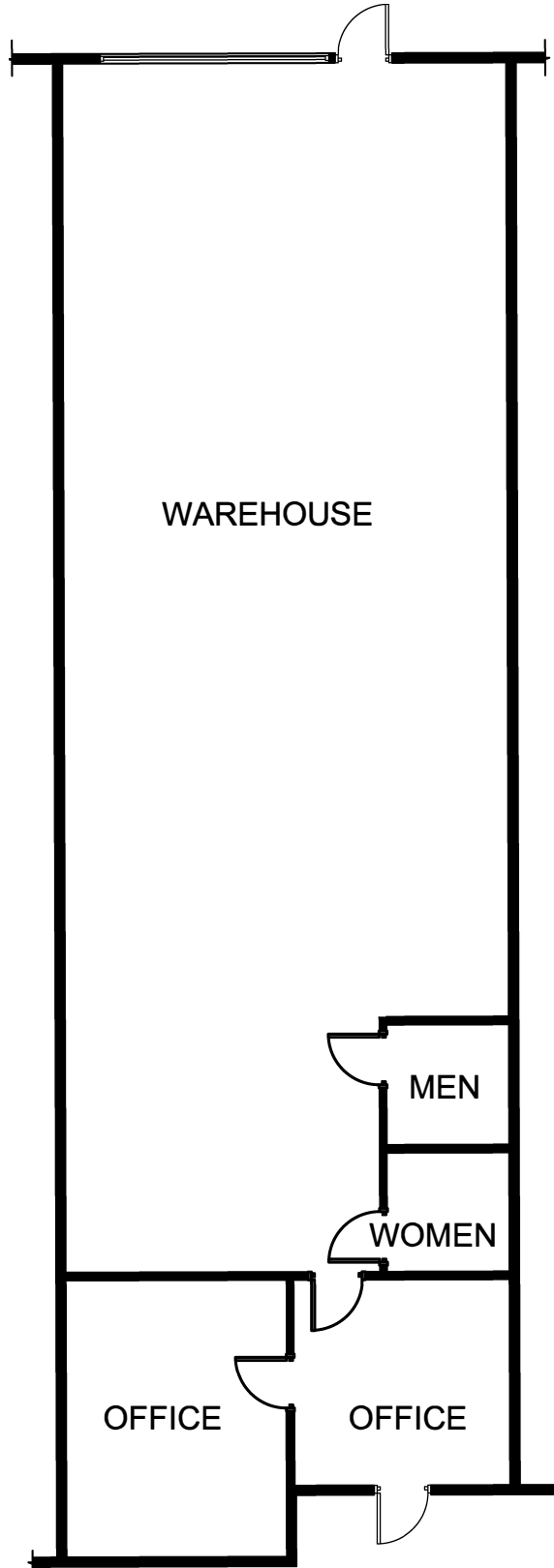
**NANCY ZARO**

Lic # 01316364  
 o 408.796.0038  
 nzaro@southbay.us

**PAULA PARISI**

Lic # 01762550  
 o 408.796.0028  
 pparisi@southbay.us

1203 Alderwood Drive | 1936 SF



**SOUTH BAY**  
DEVELOPMENT CO.

**NANCY ZARO**

Lic # 01316364  
o 408.796.0038 | f 408.379.6782  
nzaro@southbay.us  
1690 Dell Ave, Campbell, CA 95008

**PAULA PARISI**

Lic # 01762550  
o 408.796.0028 | f 408.379.6782  
pparisi@southbay.us  
1690 Dell Ave, Campbell, CA 95008